

MR Passenger Elevator

Hoistway Structure

Concrete Brick & Concrete Other

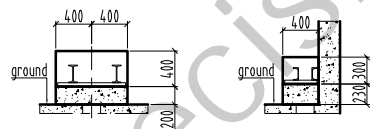
Unstandard Standard

Compact type

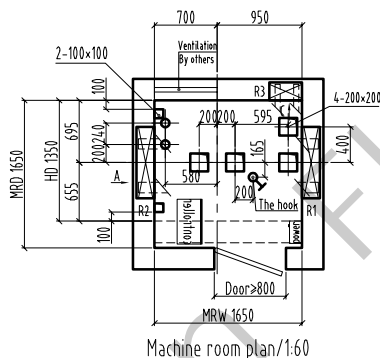
NOTE

Technical Requirement:

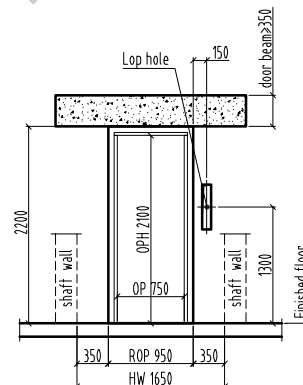
HW	HOISTWAY WIDTH	CW	CAR INSIDE WIDTH	Type	TKJ450 / 1.0 -VF		
HD	HOISTWAY DEPTH	CD	CAR INSIDE DEPTH	F/P/D	2 / 2 / 2	Door type	Center open
OP	DOOR OPENING WIDTH	CH	CAR HEIGHT	load	450 kg	speed	1.0 m/s
ROP	WALL OPENING WIDTH	MRW	MACHINE ROOM WIDTH	Machine	MCK200	Roping	2:1
OPH	DOOR OPENING HEIGHT	MRO	MACHINE ROOM DEPTH	T/sheave	φ 400	D/sheave	φ 400
OH	OVERHEAD HEIGHT	MRF	MACHINE ROOM HEIGHT	car sheave	φ 400	CW sheave	φ 400
CAR DBG	DISTANCE BETWEEN CAR GUIDE RAILS			Shaft	HW 1650 mm x HD 1350 mm		
CWT DBG	DISTANCE BETWEEN COUNTERWEIGHT GUIDE RAILS			Cabin	CW 1000 mm x CD 1000 mm		
				Door	OP 750 mm x OPH 2100 mm		



A, reserved hole/1:60 C, reserved hole/1:60



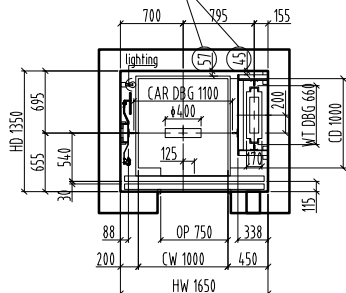
Machine room plan/1:60



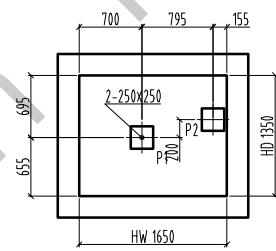
E/reserved hole/1: 60

Bottom box Lop: 100x500 (base station) 100x400 (remaining stations)
No bottom box Lop hole: φ50 hole

Please ensure the verticality of the hoistway.

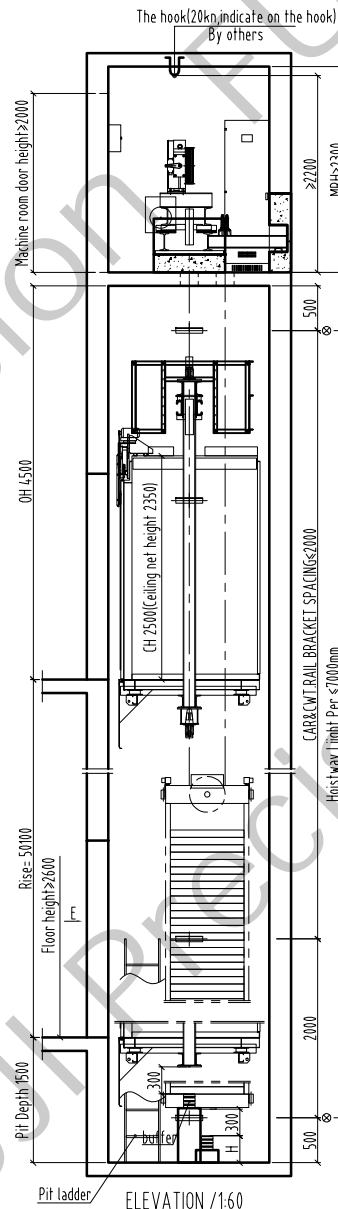


Hoistway plan/1:60



Pit plan/1: 60

When v<1.0m/s, H=300; when 1.0m/s<v<1.75m/s, H=800; when the lifting height is more than 35m, the buffer pier P2 is arranged according to the dotted line, the bearing capacity is pressed A single P2/2 calculation.



OH	4500
Rise	50100
26 F	
25 F	
24 F	
23 F	
22 F	
21 F	
20 F	
19 F	
18 F	
17 F	
16 F	
15 F	
14 F	
13 F	
12 F	
11 F	
10 F	
9 F	
8 F	
7 F	
6 F	
5 F	
4 F	
3 F	
2 F	
1 F	
G F	
B F	
Pit	1500
Floor	Height

Drawing		approver	
Drawing No.	FTK 450 - 04 -		
manufacturing no.			
Project name			
FUJI PRECISION			